

Exploring Light Energy Interactions with Earth Features



WORKSHOP

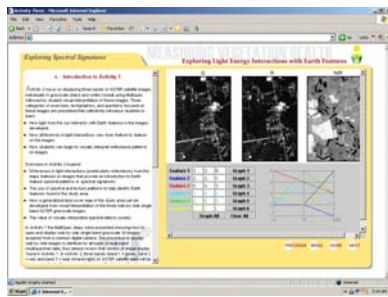
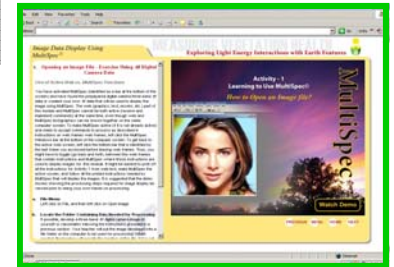


Sponsored by NASA's DIGITAL EARTH WATCH (DEW)

Come help pilot teach an exciting new NASA web site designed for exploring and monitoring Earth's environments. **AND GET PAID DOING IT**

Apply For Workshop

Exploring Light Energy Interactions with Earth Features is a NASA-sponsored web site that is part of the Digital Earth Watch (DEW) project. In this workshop, you will learn how to use an interactive web site designed to teach students how to use remotely sensed data to assess and monitor Earth's environments. This web site includes interactive activities, self-paced lessons, and



a teacher data base where all student results and responses are recorded. It also includes all teacher materials. Students will learn to understand relationships between the electromagnetic spectrum and features on Earth. They will discover the usefulness of remote sensing in their everyday lives, and how remote sensing can help to solve local, state, and national environmental problems. The workshop is most applicable to teachers teaching, Earth Science, Environmental Science, Geography, Geology, and some aspects of Life Science. Additional materials developed by other "Digital Earth Watch" partners will be discussed.

Workshop Dates:

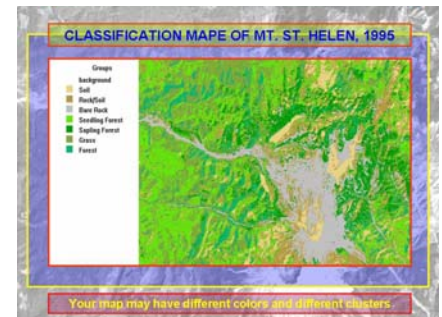
March 13th & 14th

or

July 18th & 19th

Each workshop will be limited to 10 participants, so don't delay in making your reservations as space will fill up quickly.

MAKE SURE TO SCHEDULE YOUR COMPUTER LAB BEFORE APPLYING!



You will be expected to:

- Attend both days of the workshop.
- Schedule three to five days in your school's computer lab.
- During the workshop, prepare a lesson plan that you will use in one or more classes periods back at your school.
- Teach a three to five day lesson based on the material you learned in the workshop.
- Submit a report of your experience.

You will receive:

- \$100.00 for each day of the workshop.
- \$100-\$150 for classroom instruction and follow-up (depending on the number of classes taught using workshop materials presented).
- All teaching materials.
- Room and board or a travel allowance.

Click to Apply for the Workshop

<http://baby.indstate.edu/mvh/workshopApp.htm>

Apply For Workshop

For Information, Click on "Apply for Workshop" and then e-mail Dr. Paul Mausel or Dr. Dennis Skelton